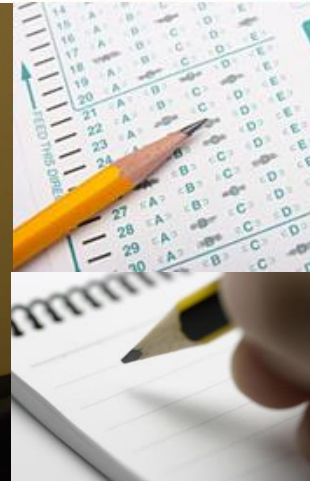
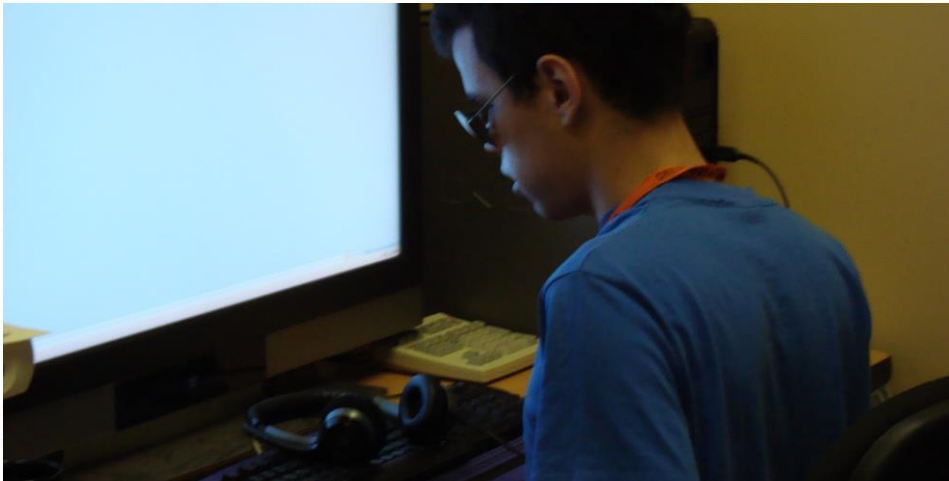




Accessing Disability Services in College

Carol Raymundo, Manager, Center for Accessibility Resources, LBCC
Earlee Kerekes-Mishra, Manager, Disability Access Services, OSU



Overview of Accommodations in Higher Education

Determining Factors

Documentation

Personal Statement

Established history of disability

AHEAD Guidelines

Medical model vs. Social model

How to get started

- Applying/Registering
- Provide sources of documentation
 - LBCC
 - OSU

Documentation Requirements for OSU

- The Diagnosis and Functional Impacts
- Testing/documentation needs to be recent between 6 mo. – 3 years depending on disability type.
- **By itself** not acceptable = IEP, 504 Plan, or a “doctors note”.
- Must be provided by a diagnosing professional.

Documentation Requirements for LBCC

- Diagnosis
 - Statement from a diagnosing professional that includes
 - Diagnosis
 - Date of onset
 - Recommended accommodations
- Student self-report to supplement little or no documentation
 - Must clearly explain how it is currently impacting student in the learning environment
 - Evidence of history of disability

Questions to consider...

- **Are there ways we can better serve students?**
- **What information can be shared between institutions?**
- **Does the student have to give documentation twice?**
- **What can one college provide vs. the other?**
- **Where do we go from here?**